

Mastering
Iconic
Building
Spaces

Argus Residence

Athens
Seaside



.01

Known for its proximity to the Athenian Riviera, Argyproupoli offers a perfect blend of urban convenience and residential tranquility.

Argus Residence the Experience

Argus Residence, adjacent to the iconic Ellinikon Metropolitan Park, is a reconversion of a former commercial building, featuring 13 exclusive luxury properties across 2 floors, promising a distinctive experience to its residents.

PREMIUM AESTHETICS

- THE USE OF NOBLE MATERIALS CREATES INTERIORS THAT EXUDE A CALMING SENSE OF SOPHISTICATION.

PRIME LOCATION

- THE AREA PROMISES AN ELEVATED LIFESTYLE, WITH EASY ACCESS TO A VIBRANT ARRAY OF SHOPPING, DINING, AND WELLNESS FACILITIES.

INVESTMENT OPPORTUNITY

- NEAR THE ICONIC ELLINIKON METROPOLITAN PARK, A UNIQUE INVESTMENT OPPORTUNITY WITH THE POTENTIAL FOR SUBSTANTIAL RETURNS.
-



.02

Prime location

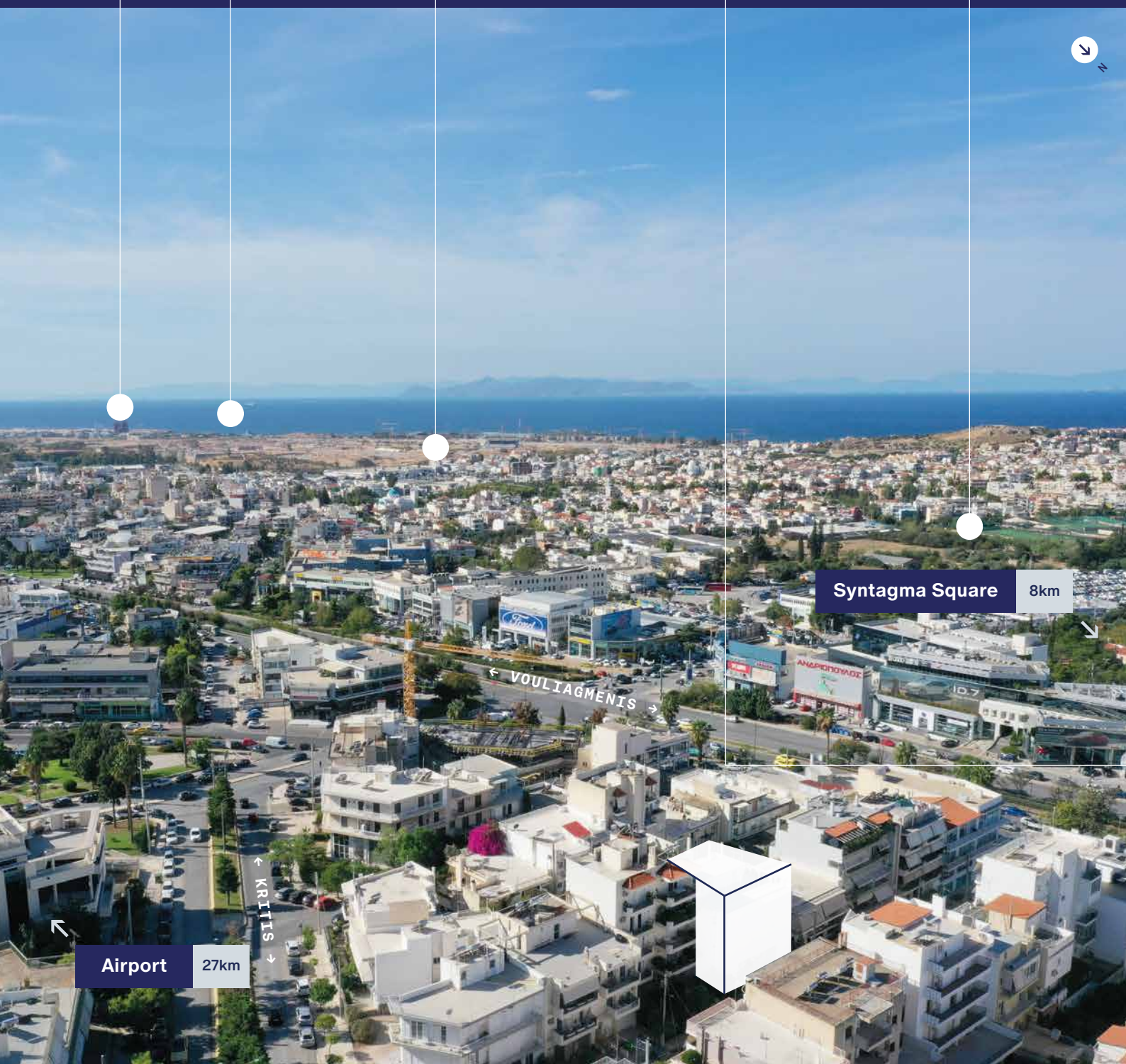
5.8KM
RIVIERA
TOWER

3.8KM
AEGEAN
SEA

1.8KM
THE ELLINIKON
METROPOLITAN PARK

220M
METRO
STATION

1.2KM
SPORT
CLUB



Syntagma Square 8km

Airport 27km

← KRITIS →

← VOULIAGMENIS →

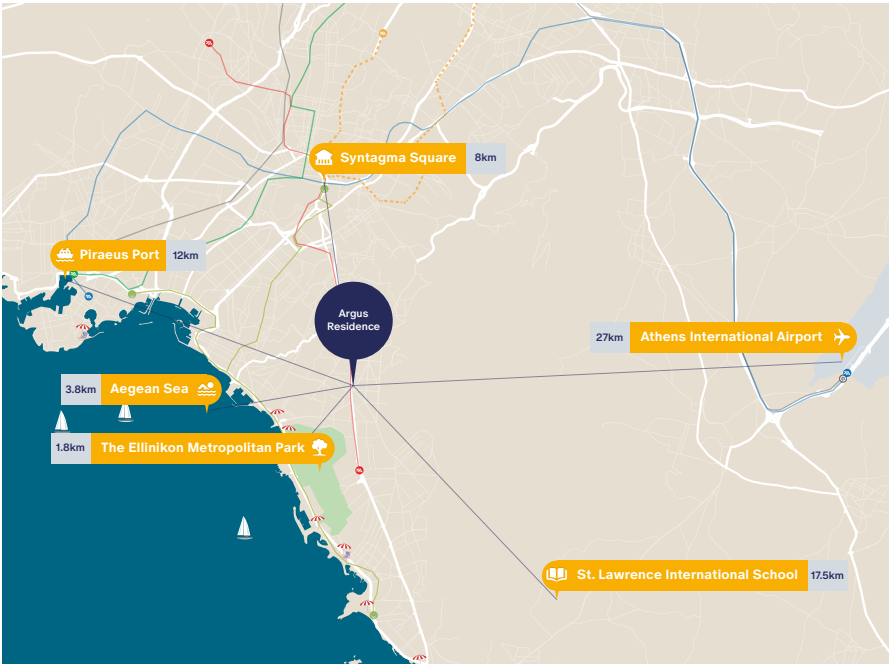
Argyroupoli provides residents with easy access to the coastline and the Mediterranean lifestyle.

8km from the center of Athens

Just 1.8km from the Ellinikon Metropolitan Park

High-end stores

Diverse culinary landscape

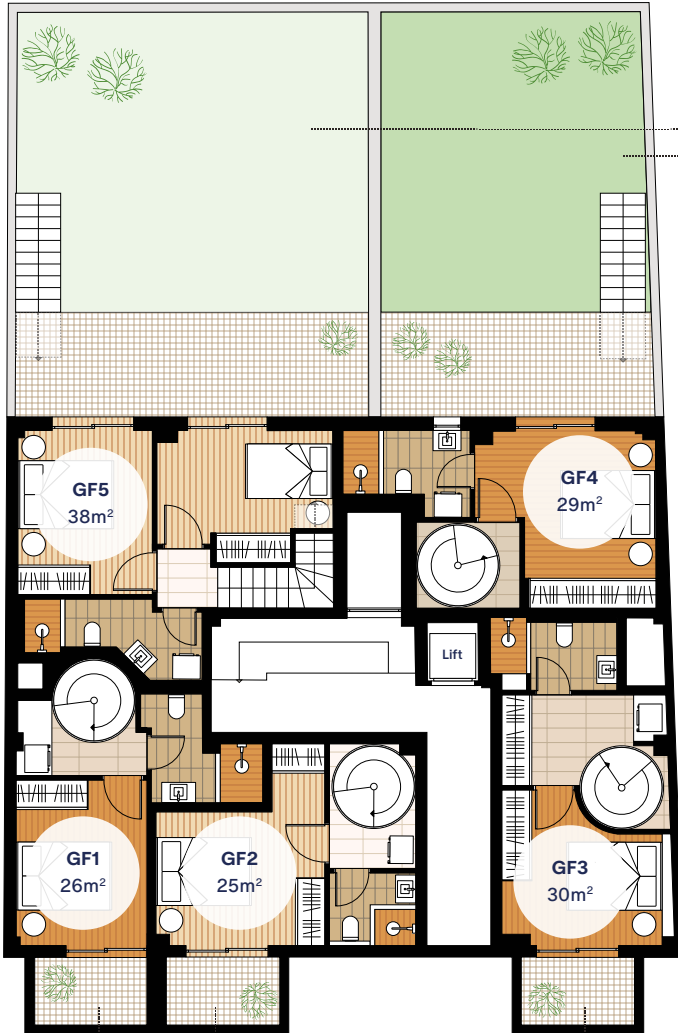


.03

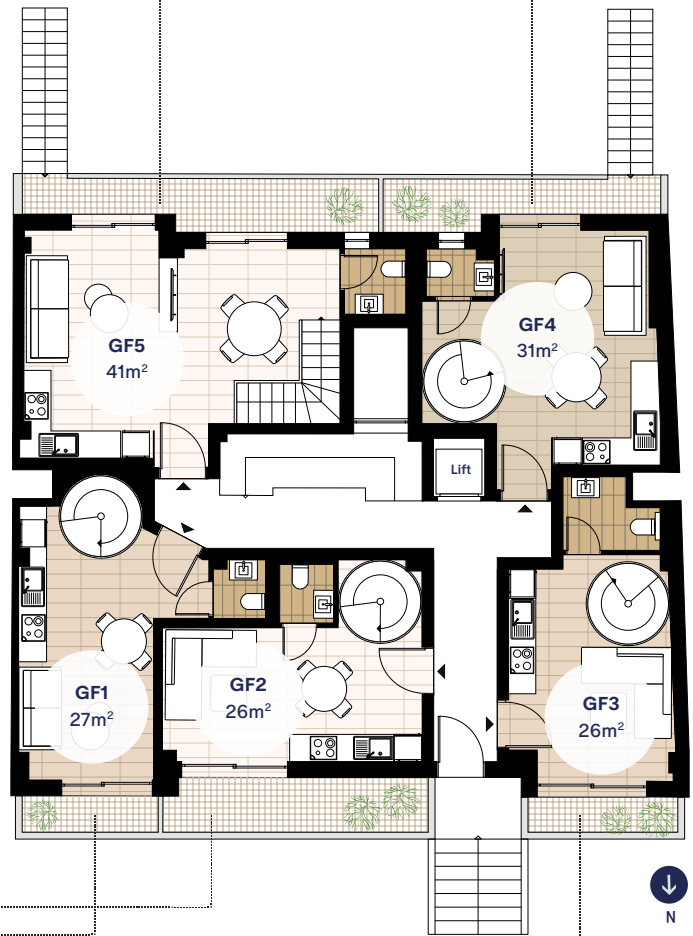
ARGUS RESIDENCE

Lower ground and Ground floor

Lower Ground



Ground Floor



Roumelis Street



1 Bed Duplex

1 Bed Duplex

1 Bed Duplex

1 Bed Duplex

2 Bed Duplex

	GF1	GF2	GF3	GF4	GF5
Bedroom	1	1	1	1	2
Bathroom	2(1WC)	2(1WC)	2(1WC)	2(1WC)	2(1WC)
Covered Area	53m ²	51m ²	56m ²	60m ²	79m ²
Balcony	7m ²	10m ²	7m ²	6m ²	9m ²
Garden	-	-	-	57m ²	74m ²
Total Area	60m ²	61m ²	63m ²	123m ²	162m ²

1st floor and 2nd floor

1st- 2nd Floor



Roumelis Street



	1 Bed Apartment	1 Bed Apartment	Studio	1 Bed Apartment
Bedroom	1	1	1	1
Bathroom	1	1	1	1
Covered Area	43m ²	42m ²	33m ²	39m ²
Balcony	8m ²	9m ²	6m ²	8m ²
Total Area	51m ²	51m ²	39m ²	47m ²

Unit Summary

.04



Unit	Floor	Type	Beds	Baths	Total Area (m ²)	Covered Area (m ²)	Balcony (m ²)	Garden (m ²)	Price
GF1	LG-G/F	Duplex	1	2(1WC)	60	53(26+27)	7	-	€309,000
GF2	LG-G/F	Duplex	1	2(1WC)	61	51(25+26)	10	-	€299,000
GF3	LG-G/F	Duplex	1	2(1WC)	63	56(30+26)	7	-	€319,000
GF4	LG-G/F	Duplex	1	2(1WC)	123	60(29+31)	6	57	€350,000
GF5	LG-G/F	Duplex	2	2(1WC)	162	79(38+41)	9	74	€450,000
A1	1st	Apartment	1	1	51	43	8	-	€283,000
A2	1st	Apartment	1	1	51	42	9	-	€280,000
A3	1st	Studio	1	1	39	33	6	-	€255,000
A4	1st	Apartment	1	1	47	39	8	-	€264,000
B1	2nd	Apartment	1	1	51	43	8	-	€295,000
B2	2nd	Apartment	1	1	51	42	9	-	€282,000
B3	2nd	Studio	1	1	39	33	6	-	€257,000
B4	2nd	Apartment	1	1	47	39	8	-	€273,000

* Information is subject to change. All the above floor areas are subject to verification following completion. All dimensions are within + or -5%

*Transfer Tax 3.09%

TRUE TO
L I V I N G SPACES

