





Aspire Spaces is a flourishing real estate development organization that strives to deliver projects of the highest quality and workmanship. The experienced founders of Aspire Spaces started the company with the sole intention of providing exceptional real estate spaces to every customer by working and partnering with the best architects, interior designers, landscape specialists, and a host of other experts

The company's intense focus on customer satisfaction through quality, consistency, and sustainability is what sets them apart from the rest.



LIVE THE
LIFE YOU
TRULY
DESERVE

The project was designed
as a low-density gated
community to add more
value to your life at
every step of your living
experience here



A HOME THAT KEEPS ON GIVING

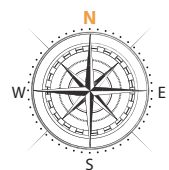
From consciously designed floor plans that give you the privacy you desire to state-of-the-art amenities that make life effortless, Ameya is a gift that grows in value with you.





A SPACE
THAT ADDS
VALUE TO
YOUR LIFE

MASTER PLAN



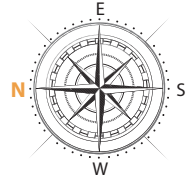
Project Overview

Extent	: 8.06 Acres
Blocks	: 8 Blocks
Number of Floors	: 13
Number of Units	: 936
Type of Flats	: 2, 2.5, 3BHK
2BHK (Sft)	: 1210, 1330
2.5BHK (Sft)	: 1495
3BHK (Sft)	: 1625, 1715, 1940

LEGEND

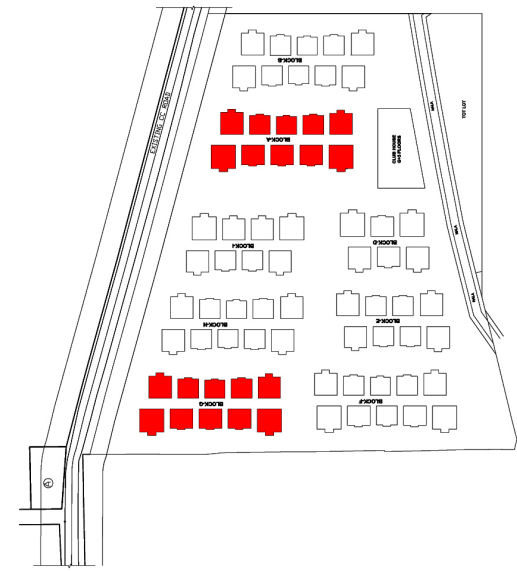
1. Entry & Exit 2. Security Cabin 3. Approach Avenue 4. Central Greens
5. Passive Seating Areas 6. Yoga Deck 7. Toddler's Play Area 8. Old Folks Corner
9. Floor Games Plaza 10. Skating Rink 11. Pavilion 12. Stepped Court
13. Yoga Lawn 14. Tree Court 15. Multipurpose Play Court (For Volleyball/Box Cricket)
16. Practice Basket Ball Court 17. Children's Play Area 18. Club Lawn
19. Cricket Pitch 20. Reflexology Pathway 21. Seating Pocket & Tree Avenue 22. Herbal Garden
23. Garden Waste Yard 24. Outdoor Gym 25. Transformer Yard 26. DG Yard 27. Periphery Planting
28. Tower Entry 29. Club House Entry 30. Stilt Parking 31. Visitor's Parking 32. Water Body 33. Gas Bank

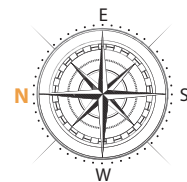




Block A & G
(Typical Area Statement)

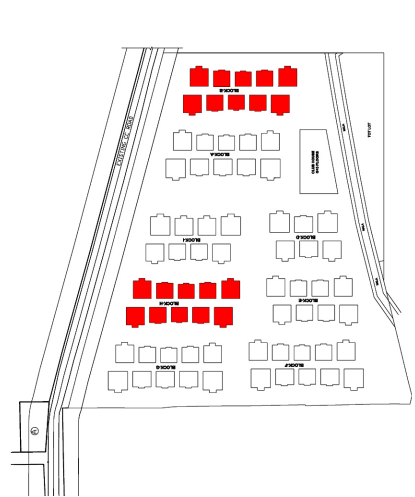
Flat No	Area (sft)	Facing	BHK
1	1625	WEST	3 BHK
2	1940	EAST	3 BHK
3	1495	EAST	2.5 BHK
4	1495	EAST	2.5 BHK
5	1495	EAST	2.5 BHK
6	1940	EAST	3 BHK
7	1715	WEST	3 BHK
8	1330	WEST	2 BHK
9	1210	WEST	2 BHK
10	1330	WEST	2 BHK

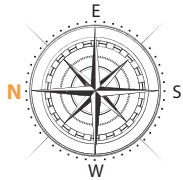




Block B & H
(Typical Area Statement)

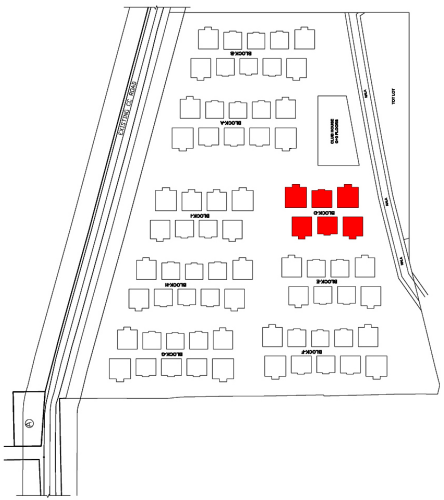
Flat No	Area (sft)	Facing	BHK
1	1715	WEST	3 BHK
2	1715	EAST	3 BHK
3	1330	EAST	2 BHK
4	1210	EAST	2 BHK
5	1330	EAST	2 BHK
6	1715	EAST	3 BHK
7	1715	WEST	3 BHK
8	1330	WEST	2 BHK
9	1210	WEST	2 BHK
10	1330	WEST	2 BHK





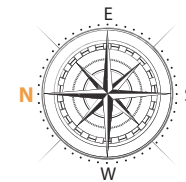
Block D
(Typical Area Statement)

Flat No	Area (sft)	Facing	BHK
1	1940	WEST	3 BHK
2	1715	EAST	3 BHK
3	1495	EAST	2.5 BHK
4	1715	EAST	3 BHK
5	1940	WEST	3 BHK
6	1495	WEST	2.5 BHK



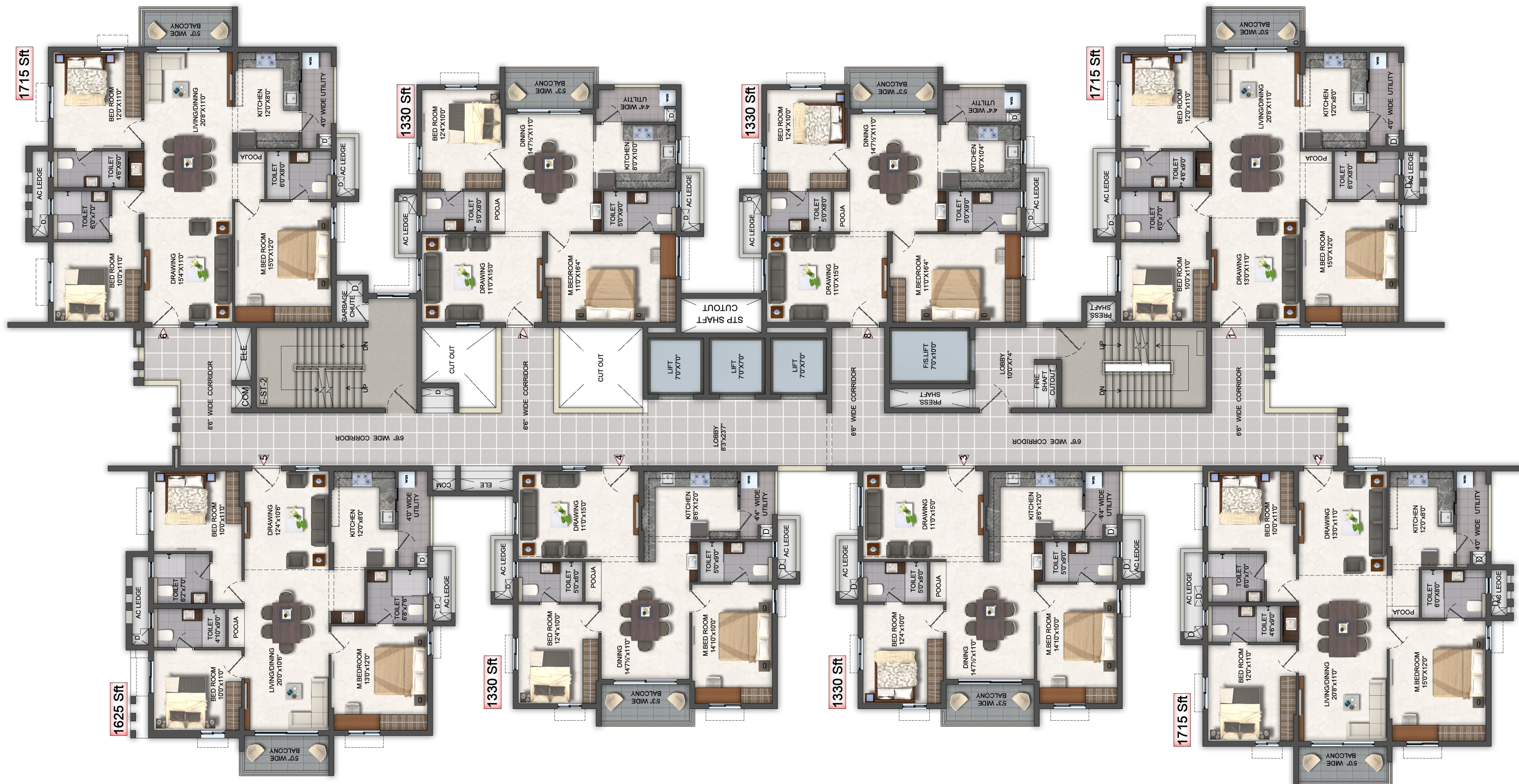
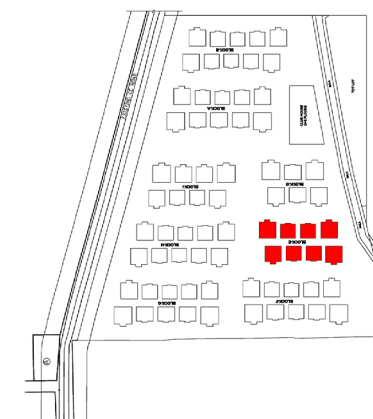
A HOME
THOUGHTFULLY
PLANNED TO
PERFECTION

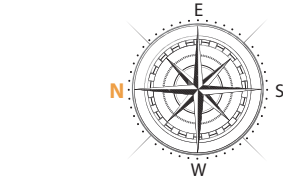




Block E (Typical Area Statement)

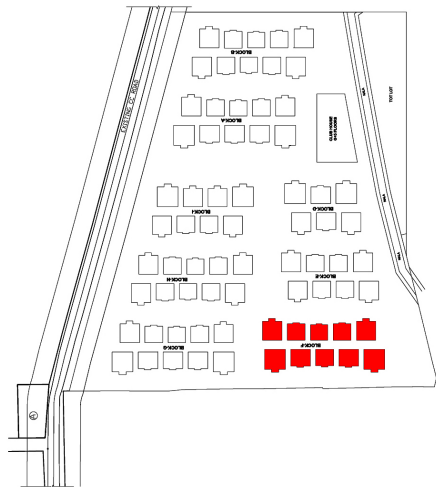
Flat No	Area (sft)	Facing	BHK
1	1715	WEST	3 BHK
2	1715	EAST	3 BHK
3	1330	EAST	2 BHK
4	1330	EAST	2 BHK
5	1625	EAST	3 BHK
6	1715	WEST	3 BHK
7	1330	WEST	2 BHK
8	1330	WEST	2 BHK

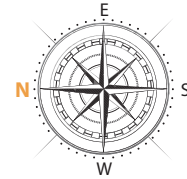




Block F
(Typical Area Statement)

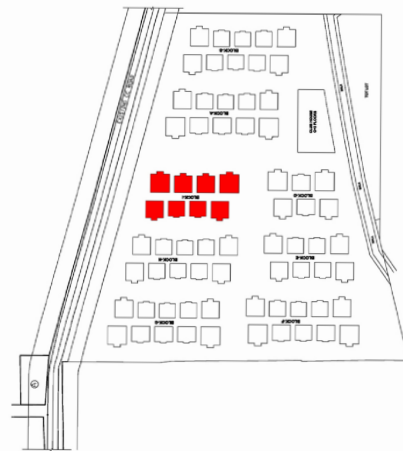
Flat No	Area (sft)	Facing	BHK
1	1715	WEST	3 BHK
2	1940	EAST	3 BHK
3	1495	EAST	2.5 BHK
4	1330	EAST	2 BHK
5	1495	EAST	2.5 BHK
6	1940	EAST	3 BHK
7	1715	WEST	3 BHK
8	1330	WEST	2 BHK
9	1210	WEST	2 BHK
10	1330	WEST	2 BHK





Block I
(Typical Area Statement)

Flat No	Area (sft)	Facing	BHK
1	1940	WEST	3 BHK
2	1625	EAST	3 BHK
3	1330	EAST	2 BHK
4	1330	EAST	2 BHK
5	1625	EAST	3 BHK
6	1940	WEST	3 BHK
7	1625	WEST	3 BHK
8	1625	WEST	3 BHK





AMENITIES



Reception
With Double
Height Lobby



Grocery Store



Day Care &
Enrichment Centre
for Kids



Conference &
Meeting Rooms



Kid's Pool with
Temperature
Control



Swimming Pool
With Terrace
Park View



Aerobics



Dedicated Work
Spaces (24x7 Wi-Fi)



Multi-Level
Banquet Hall
With Party Lawn



Health Healing
Club

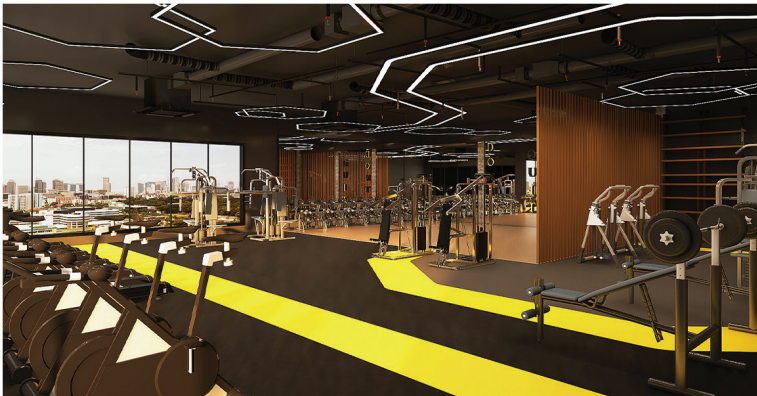
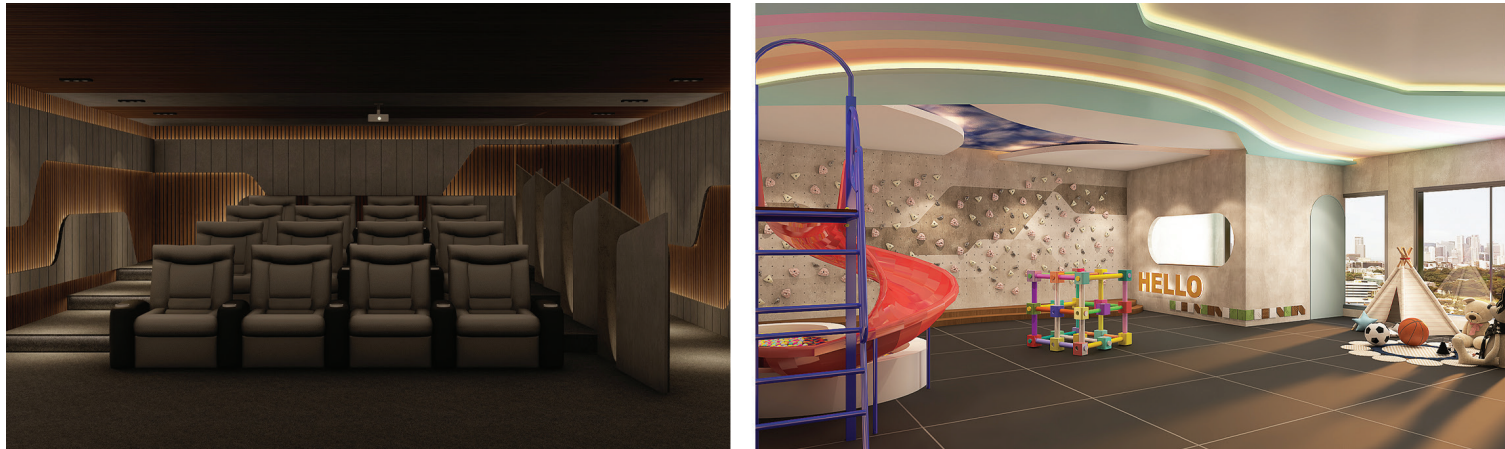


Dedicated
Culture Center



O2 Designated
Spaces For Yoga/
Meditation





AMENITIES



Badminton & Squash Courts



Indoor Games
(Carrom, Chess, TT, Snooker)



Coffee Shop



Movie Theatre



Guest Rooms



Indoor Gym



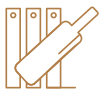
Party Lawn



Spa, Salon & Parlour



AMENITIES



Box Cricket
/ Volleyball



Skating Rink



Basketball
Court



Outdoor Gym



Sandpit



Children's
Play Area



Seating Pockets
And Tree Avenue



Reflexology
Pathway



1km Long
Jogging Track

SPECIFICATIONS

STRUCTURE

R.C.C. framed structure with solid or AAC blocks

SUPER STRUCTURE

8” thick solid block work for external walls & 4” thick solid block work for internal walls.

FLOORING

- Living & Dining: 800 x 800 mm Sized Double charged vitrified tiles of reputed make with Spacer Joints
- Bedrooms & Kitchen: 800 x 800 mm size Double charged vitrified tiles of reputed make with spacer joints
- Balconies: Anti-skid vitrified tiles of best brand

DOORS AND WINDOWS

- Main Door: Engineered/Hardwood frame finished with melamine sprayfinish on veneered flush shutters with reputed hardware of brand shoba or equivalent make.
- Internal Doors: Engineered/Hardwood door frame & laminate shutter and hardware of reputed make
- FRENCH DOORS: UPVC door frames with float glass panelled sliding shutters with provision for mosquito mesh track
- WINDOWS: UPVC window glazing system with sliding/casement shutters with provision for mosquito mesh track

PAINTING

- Internal: Smooth putty finish with 2 coats of premium acrylic emulsion paint of reputed make over a coat of primer
- External: Textured finish and 2 coats of exterior emulsion paint of reputed make

TILE CLADDING & DADOING

- Master bedroom bathroom 600x600 mm vetrified tiles and other bathrooms glazed/matt finish ceramic tiles dado up to 7’ height
- Dadoing in Kitchen: Glazed ceramic tiles dado upto 2’ height above Kitchen platform (optional)

KITCHEN

- Separate municipal water tap (manjeera or any other water provided by GHMC along with bore well water)
- Provision for fixing of water purifier, exhaust fan/chimney
- Utility/wash area-provision for washing machine/dish washer & wet area for washing utensils etc.

TELECOM

- Mobile app network facility to all the units connecting security and neighbourhood
- Telephone points in living room

BATHROOMS

- EWC with vertical stack flushing system
- Provision for geysers in all bathrooms
- All CP fittings by Grohe/American standard/Equivalent
- Sanitary by Grohe/American standard/Equivalent

ELECTRICAL

- Power outlets for air conditioners in living, dining and bedrooms
- Power outlet for geysers in all bathrooms
- Power plug for Hob, chimney, refrigerator, microwave oven, mixer/grinder in kitchen, washing machine in utility area
- Three phase supply for each unit and individual prepaid metres
- Miniature Circuit Breakers (MCB) for each distribution board of Legrand/equivalent
- Modular switches of Legrand/equivalent

POWER BACKUP

100 % D.G backup with Acoustic enclosure

CABLE TV

Provision for cable connection in living room and in all bedrooms

INTERNET

Provision for internet connection in living room and master bedroom

LPG / PNG

Supply of LPG/ PNG with piped gas system

WASTE MANAGEMENT

Dedicated garbage collection SS chute provided in all floors in all towers of basement 1

SECURITY / BMS

- Sophisticated round-the-clock security/surveillance system
- BMS for electricity consumption with prepaid card system will be provided (centralized billing)
- Surveillance cameras at the main security and entrance of each block as well as inside the lifts
- Panic button and intercom in the lifts connected to the security room
- Solar power fencing around the compound

LIFTS

- High speed automatic elevators of Schiedler/equalent with rescue device and V3F for energy efficiency. Granite/tile cladding for lift entrance
- 1 service elevator for each block of reputed make with rescue device and V3F for energy efficiency. Granite/tile cladding for lift entrance

WTP & STP

- Fully treated water will be made available through an exclusive water softening plant.
- Hydro-pneumatic system for even pressure water supply at all floors.
- A sewage treatment plant of adequate capacity inside the project, treated sewage water will be used for the landscaping and flushing purpose.
- Rain water harvesting at regular intervals provided for recharging ground water levels

FIRE & SAFETY

- Fire hydrant and fire fighting system on all floors and basements
- Fire alarm and Public Address system on all floors and basements

BILLING SYSTEM

Automated billing system for Water, Power & LPG/CNG supply

Location Map
(not to scale)



Scan for Location



Location Advantages

Educational Institutions: Vikas The Concept School - 3 Mins | Senita The Global School - 5 Mins | Kennedy The Global School - 5 Mins | Sanford The Global School - 5 Mins
Silver Oaks School - 5 Mins | Oakridge International School - 15 Mins

Hospitals: SLG Hospitals - 5 Mins | Mamata Academy of Medical Sciences - 5 Mins | Landmark Hospitals - 10 Mins | Ankura Hospitals - 10 Mins
Rainbow Children's Hospital - 10 Mins | KIMS Hospital - 15 Mins

Entertainment & Shopping: GSM Mall - 10 Mins | Manjeera Mall - 15 Mins | Forum Mall - 15 Mins | Sarath City Capital Mall - 20 Mins | IKEA : 25 Mins

Transportation: Miyapur Bus Depot - 5 Mins | Miyapur Metro Station - 10 Mins | Lingampally Railway Station - 20 Mins



Aspire Spaces Pvt. Ltd.

Road No.17, Beside Bank of Baroda, Jubilee Hills, Hyderabad,
Telangana - 500 033.

For More Info Call:

97 97 97 3 777

97 97 97 8 777

www.aspirespaces.com



TS RERA No:
P01100002844

We've Brought Together The Best
To Ensure You Get The Best

Architects



MEP Consultants



Structural Consultants



Landscape Consultants



Funded by



"The project is financed by SWAMIH Investment Fund I, an AIF sponsored by Govt. of India & managed by SBI Ventures Limited (formerly known as SBICAP Ventures Limited)"

NOTE : This brochure is purely conceptual and not a legal offer. Area is tentative and actual areas arrived at completion of the flat may differ.
The promoters reserve the right to make changes in elevation, plans & specifications as deemed fit.